

What is the EIT?

The European Institute of Innovation and Technology (EIT) drives innovation in Europe by supporting entrepreneurs, innovators and students across Europe to turn their best ideas into reality.

How does the EIT work?



Trains a new generation of entrepreneurs

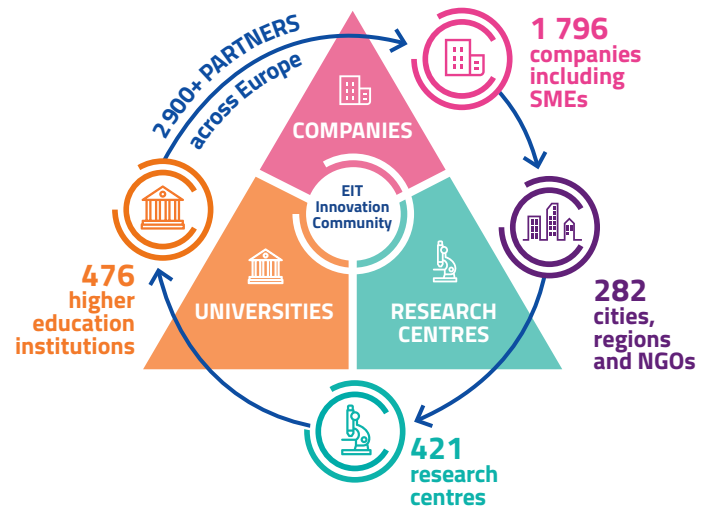


Develops innovative products and services



Power start-ups & scale-ups

Europe's largest innovation community



EIT Climate-KIC
Working to accelerate the transition to a zero-carbon economy

EIT Digital
Driving Europe's digital transformation

EIT Food
Leading a global revolution in food innovation and production



EIT RawMaterials
Developing raw materials into a major strength for Europe

EIT InnoEnergy
Achieving a sustainable energy future for Europe

EIT Health
Giving EU citizens greater opportunities to enjoy a healthy life



EIT Manufacturing
Strengthening and increasing the competitiveness of Europe's manufacturing industry

EIT Urban Mobility
Smart, green and integrated transport

The EIT's Innovation Communities create and find innovative solutions to major societal challenges

Powering innovators across Europe



13 000+ Jobs created



3.9B€ Investment raised by EIT ventures



3 800+ Ventures supported



1 400+ New products and services



3 800+ Graduates completing EIT programmes



64 Innovation Hubs across Europe