

## EIT COMMUNITY BOOSTER - SCALING NEW EUROPEAN BAUHAUS VENTURES

Supporting the New European Bauhaus in building beautiful and sustainable experiences together, the *EIT Community Booster* will support the selected ventures in the form of grants and services worth EUR 50 000 each, to help drive sustainable change for cities, industries, climate, food, wellbeing and improve the overall quality of life of European citizens. The winning teams have been selected among a large pool of 1029 applications from 37 countries and operate across a wide spectrum of sectors and industries. Get to know the selected ventures below:

### SUPPORTED BY EIT CLIMATE-KIC:

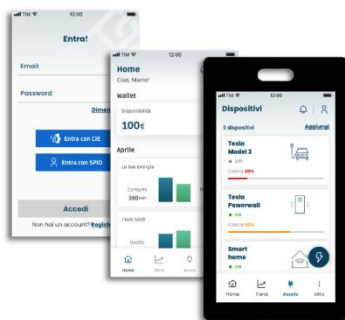


#### Transition One (France)

Transition-One retrofits a series of small, popular fossil fuel powered cars into electric cars. By modifying and replacing internal combustions in aging vehicles, Transition One is able to make a retrofit unit to accelerate the transition to electric mobility in a reduction-based and circular way.

#### NEST (Spain)

Natural Eco-System Tiles (NEST) expands the capacities of nature in the cities and protects the biodiversity in built environments by creating living spaces for the fauna and flora within a singular building façade system. NEST boosts the quality and attractiveness of public spaces in places where traditional horizontal greening is not available, while maintaining high performance of the building, healthier micro-climates and greater ecological density.

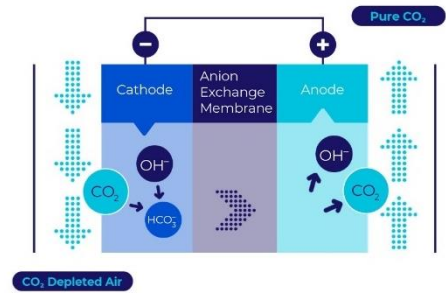


#### PROSUME (Italy)

PROSUME (Prosumer App & Toolkit) provides software tools for Energy Community management, to empower citizens to engage in the energy transition by shaping new market and business models. It is a new flexible, open, decentralized Energy Resource Management Interface using trusted technologies to unify and integrate energy services for the new 'prosumer' - individuals who both consume and produce.

### RepAir Carbon Capture (Israel)

RepAir generates Renewable Carbon by capturing carbon dioxide directly from the air using efficient and modular electrochemical technology. The captured carbon dioxide is converted into synthetic fuels and used to enrich urban farms to increase crop yield.



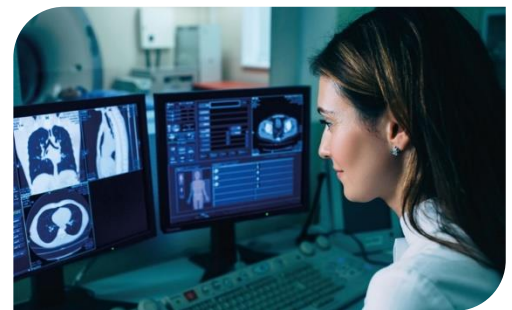
### Living Light (Netherlands)

Living Light is an innovative light application of which the energy is generated through the collaboration with microbes in the soil. Living Light inspires people to take care of nature and makes sure that the hidden energy potential of nature can be used in a planet friendly way.

## SUPPORTED BY EIT DIGITAL:

### Avicenna AI (France)

Improving accuracy detection at the entry point of the healthcare system means reducing CO<sub>2</sub> emissions, ensuring quality of life of the citizens, and optimising resource allocation. Through an innovative design of AI algorithms, the Avicenna solution allows optimal healthcare entry point accessibility and optimization of workflow management, allowing the right deployment of healthcare resources and a drastic improvement of the patient's quality of the experience in the healthcare system.



### Workwize (Netherlands)

The recent COVID-19 emergency accelerated the progressive shift to remote and hybrid working. Workwize aims to optimize the setting up of remote workspace environments in order to improve both affordability and the employee's quality of experience, deploying high quality and affordable remote working "packages" (workstation, furniture, services etc.) that are also aesthetically valuable and appreciative. Furthermore, the service allows remote working station management, maintenance and rotation for more sustainable resource allocation in the office.



### Decision Brain (France)

Decision Brain combines optimization, machine learning and artificial intelligence techniques to create innovative and customizable AI-based decision support solutions that drive operational efficiency. The company focuses on sizing, planning, scheduling and dispatching across several industries, from pharma salesforce to automotive, transportation, and textile manufacturers.



By focusing on optimizing resources to perform a given demand, Decision Brain’s solutions generate a significant positive environmental impact reducing the carbon footprint customers’ operations.



### Oxford Immune Algorithmics (United Kingdom)

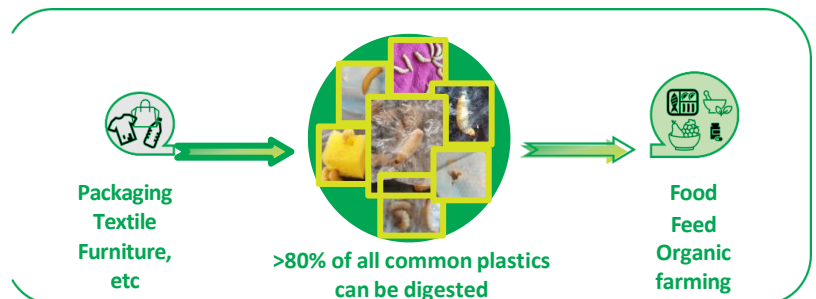
Oxford Immune Algorithmics (OIA), has developed a remote patient monitoring AI-driven web-based platform that allows clinicians to monitor their patient's blood tests with advanced AI-driven tools for precision, predictive medicine, and a personalised experience. Cost-effective immune health

monitoring is hugely important for improving public health and delivering on the promise of personalised and precision medicine that can enable early and accurate diagnosis. Algoocyte allows better inclusion of patients with chronic diseases, ensuring better health outcomes and patient-doctor relationships.

## SUPPORTED BY EIT FOOD:

### Norbite (Sweden)

Norbite provides a revolutionary solution to tackle plastic pollution by insects, transforming plastic into animal feed, contributing to the sustainable food production growth needed to meet the demands of a growing population. In a totally circular process, plastic waste gets upcycled into healthy and nutritious food and feed formulators.





### Nabo Farm (Denmark)

Nabo Farms uses hydroponics and modern growing lights to create sustainable urban farms, growing large amounts of healthy greens with 90% less water, land and energy use. Educational and community-building aspects are strongly embedded into the circular business model of the urban farms developed by Nabo, that promotes urban and local farming to increase the autonomy of local communities and promote the consumption of food locally grown

### Inoqo (Austria)

Inoqo is a lifestyle app that helps consumers make environmentally and socially conscious choices with their routine grocery shopping. The app connects citizens with sustainable and low-carbon food diets, makes available monthly raffles enabling users to claim back 50-100% of purchase value based on sustainability of choices. Moreover, the all-female management team provides a distinctive gender focus to the societal issues addressed.



### Crafting Future (Germany)

Crafting Future develops sustainable and reusable containers for the food industry. Their business-model ensures that reusable packaging-solutions are developed in line with the Circular Economy model, available at fair and competitive prices for everybody. The company also ensures decent jobs at the local level in the EU without externalising labour force. The final product is a beautiful, minimalistic object of design.

## SUPPORTED BY EIT MANUFACTURING:

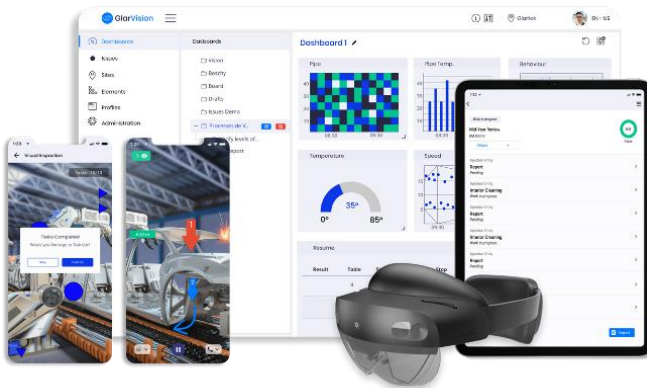
### Breeze Technologies (Germany)

Breeze Technologies is a modern air quality sensor that collects data and uses artificial intelligence to support cities, businesses and NGOs worldwide in creating healthier environments. Breeze leverages cutting-edge technologies to deliver measurable societal impact by creating transparency about hyperlocal air quality levels. The start-up then uses the collected data to facilitate clean air action implementation and management to support increase in air quality levels.



### ScrapBees (Germany)

ScrapBees aims to transform existing markets by accessing and recycling the untapped urban mines of secondary raw materials. ScrapBees' tech-driven, on-demand pick-up service shortens the value chain and allows Steel Producers to source raw materials locally and display their Scope3 emissions.



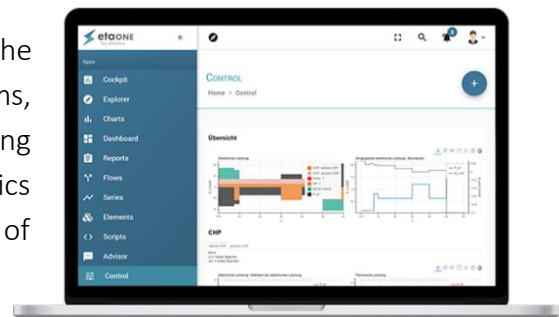
### Glartek (Portugal)

Glartek's Augmented & Connected Worker Platform provides a highly configurable no-code back office to digitize operational procedures performed by frontline workers, such as maintenance, operations, production, quality, safety and supply chain management, using augmented reality. The solution increases the knowledge and skills of the frontline workers and

improves the operational excellence of the manufacturing companies, reducing downtimes and waste while increasing the safety of all workers.

### Ealytics (Germany)

Ealytics platforms provide all the necessary tools for the analysis and optimization of industrial energy systems, from real-time data connection and automated modelling to plant operation optimization and control. Ealytics contributes to lower costs, lower environmental impact of industrial production and prevents greater dependence on energy imports.





## SUPPORTED BY EIT URBAN MOBILITY:

### Nudgd AB (Sweden)

Nudged is a digital software that uses behavioral science to support more sustainable choices. Through smart and timely nudges administered by a smartphone application, the software helps citizens and employees shift to more sustainable travel habits and track their progress. Their solution is also used to nudge behavioral changes on both corporate and municipality level to increase the experience and style of the public realm.



### Jonna AB (Sweden)

Jonna is a subscription based biking service aiming to increase cycling in cities, by making it affordable for everyone to ride a quality electric bike for pleasure and commuting. Jonna's subscription-based model keeps track of all bikes, ensuring proper service and maintenance, thereby prolonging the lifecycle of each bike and contributing to a sustainable mode of transportation for citizens.

### Luna Systems (Ireland)

Luna is an AI-camera based solution that provides real time and irrefutable information to cities and operators of rental scooters and bikes. Luna ensures that rented bikes and scooters are operating in the right lane and parked in the right spot avoiding cluttering and pedestrian traffic. Luna is taking their solution to next level by including safety features using the camera as 'a third eye'.

