



# EIT Manufacturing

Corporate presentation

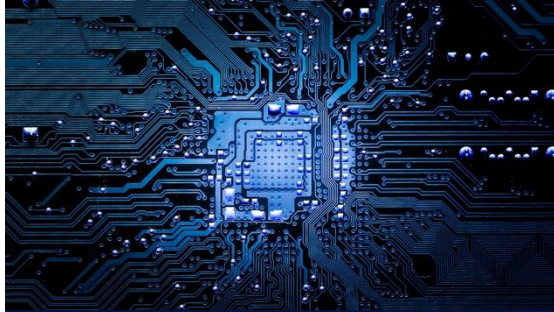


Co-funded by the  
European Union



[eitmanufacturing.eu](http://eitmanufacturing.eu)

# Shared challenges across Europe and the world



Digital  
transformation



Sustainability



Competition



## Our vision

Global manufacturing innovation is led by Europe.



## Our mission

Bring together manufacturing actors across Europe to integrate innovation and education for an entrepreneurial and sustainable Europe.

# From ramp-up to growth

EIT Manufacturing leads  
global manufacturing  
innovation

## Growth phase

Gain trust through excellence

5 years

## Ramp-up phase

Addressing European challenges

2 years

## Initial phase

Engaging committed partners

# Unique approach: Innovation based on industry needs

- Public-private partnership
- A holistic, tested method
- Focus on solutions to high-value manufacturing challenges
- 80+ full members, 50+ activity partners: leading companies, universities and research organisations
- €400M budget until 2026



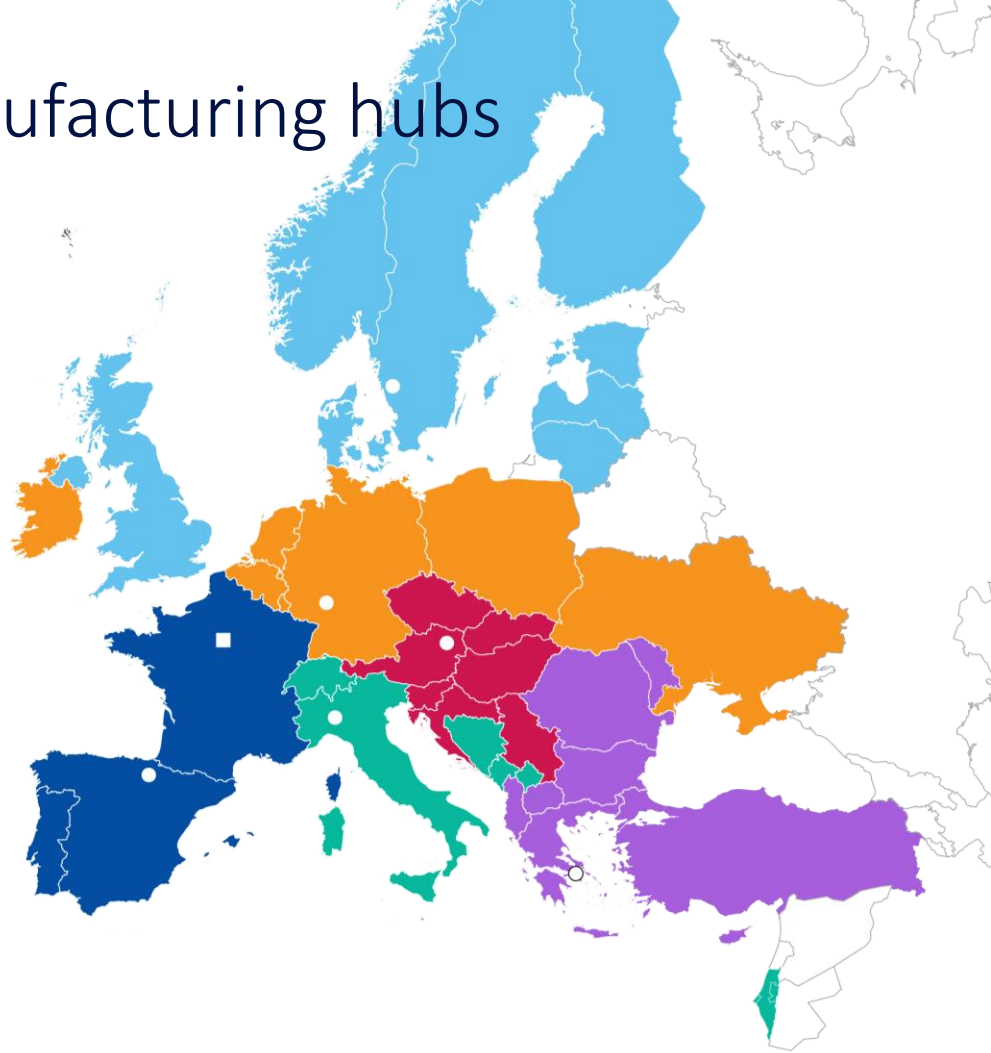
# Locations: Linking key manufacturing hubs

Legal Entity **France**

Headquarters **Paris**

6 Co-location Centers (CLCs)

- **West** San Sebastian, Spain
- **North** Gothenburg, Sweden
- **Central** Darmstadt, Germany
- **South** Milan, Italy
- **East** Vienna, Austria
- **South-East** Athens, Greece



# Four focus areas: The Flagships



**Flexible production systems**  
for competitive manufacturing



**Low environmental footprint**  
systems & circular economy  
for green manufacturing

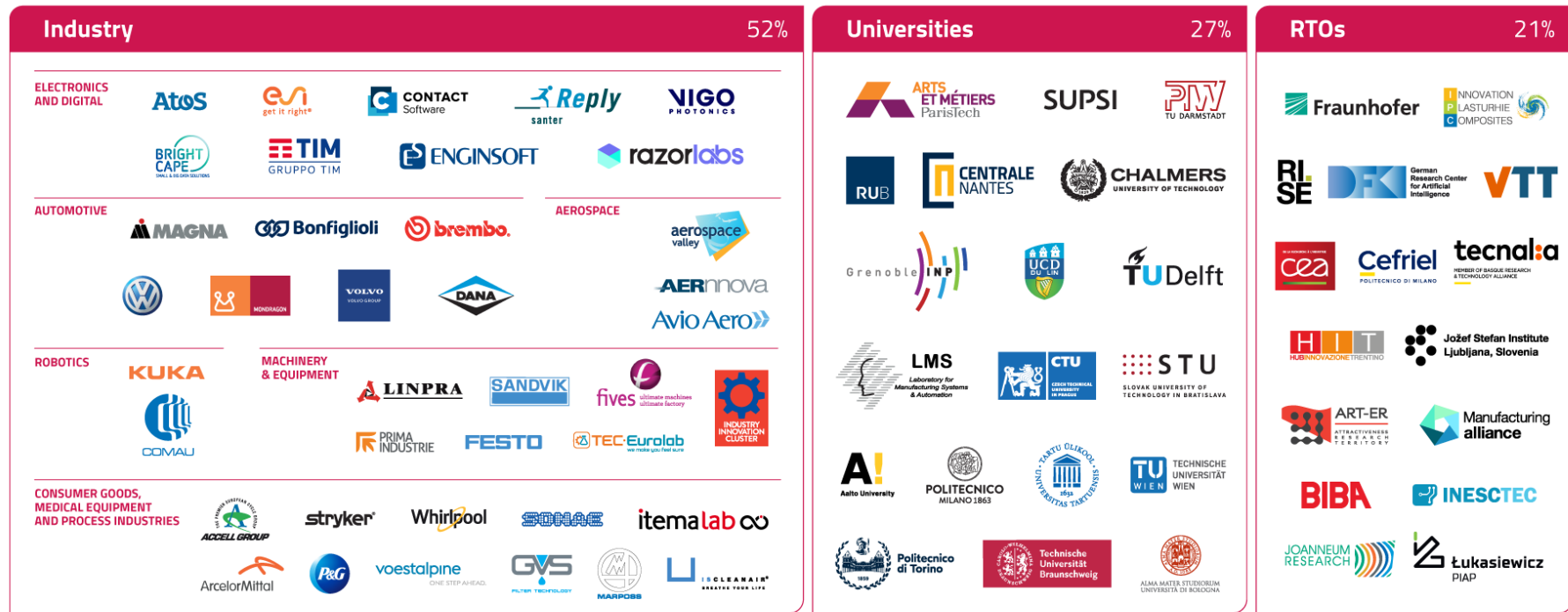


**Digital & collaborative solutions**  
for innovative manufacturing  
ecosystems



**Human-machine co-working**  
for socially sustainable  
manufacturing

# Powerful partnership: 80+ partners from 20+ countries



As of March 2022



# Partnership model

## Members

- Formal accession process
- Annual membership fee\*
- Voting rights in the general assembly of the EIT Manufacturing association

Large enterprises, RTOs and Universities; Mid-sized Companies; SMEs; and Young Companies.

## Activity partners

- Participation on activity basis
- Reduced membership fee; no financial obligations at the end of the activity
- No voting right in the general assembly

Project participants

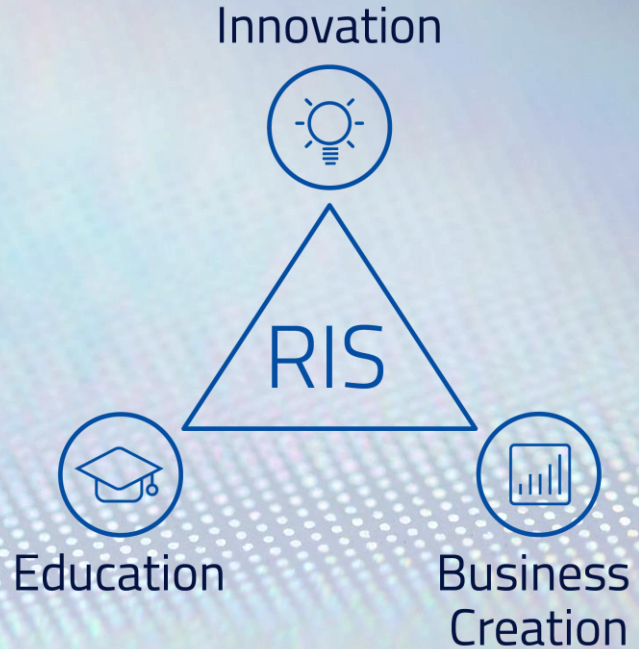
## Network partners

- Discussion partner for further development
- Representation in EIT Manufacturing advisory councils
- No formal member of EIT Manufacturing association

Associations and incubators

# The strength of EIT Manufacturing

To ensure that innovations reach the market, industry has the right talent and entrepreneurs can thrive, EIT Manufacturing connects and integrates the areas of education, innovation and business creation and the Regional Innovation Scheme (RIS).



# Goals by 2030: Green, innovative & the right skills



**30%** of  
material use  
is circular



**60%**  
sustainable  
production  
practices



Create **360**  
new solutions



**€325M**  
investment  
attracted by  
EIT ventures



**50,000**  
people  
trained and  
up- or  
re-skilled



Create and  
support  
**1,000**  
startups

# Thank you!



@EITManufactur  
@EITManufacturing  
eitmanufacturing

[eitmanufacturing.eu](https://eitmanufacturing.eu)