

**HiAI – Human in the AI Loop**

A stylized, light blue outline of a coffee cup with a handle on the right and three wavy lines above it representing steam. The cup is centered on the right side of the slide.

**KIC' Café**

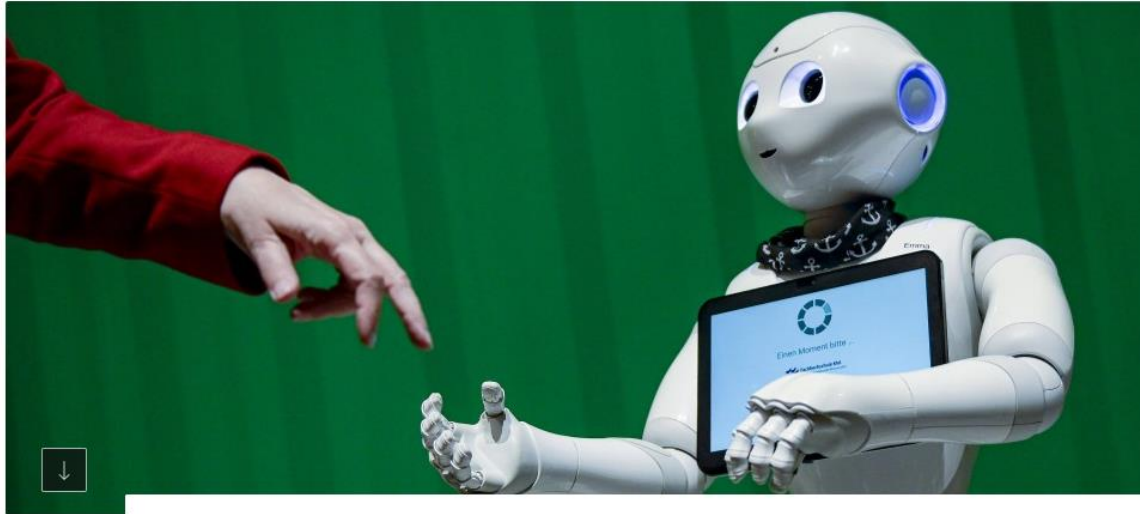
**Manufacturing Impact.**

# 1. Yesterday in German Newspaper

UMFRAGE

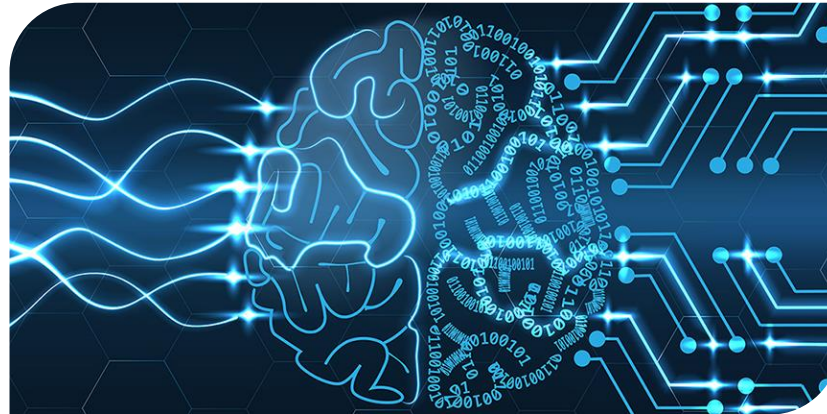
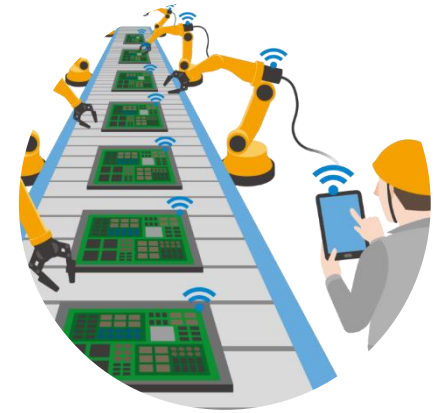
## One third are afraid of Artificial Intelligence

VON SUSANNE PREUSS, STUTTGART - AKTUALISIERT AM 10.11.2020 - 14:58



## 2. The Challenge

- Blue collar workers are not prepared for AI in production
  - What technical knowledge is necessary?
  - What are their prejudices?
  - What is the impact on the social structure of a company?



### 3. The Team

- Festo Didactic
- Siemens Education
- Politecnico di Milano
- PTW TU Darmstadt

Tobias Schubert

Stephan Szuppa, Sophie Hoppe

Marta Pinzone, Giacomo Biscardo

Sebastian Bardy



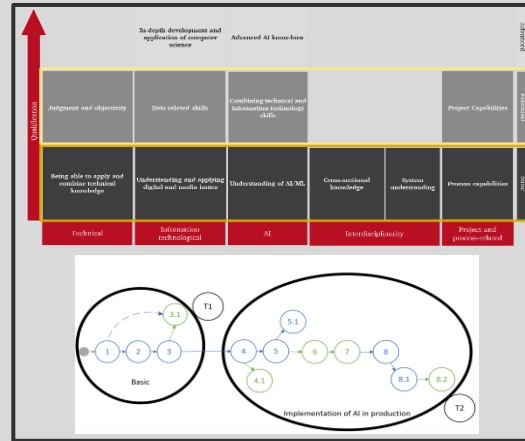
# 4. The Goal

Development of learning content for shop floor employees to get familiar with AI&ML

## Workshop: Interviews with Experts from Industry

Who is my user	What is the benefit for the user (Problem to be solved)
Operator of Production Line with CNC machines for highly flexible production purposes	Replace manual insertion and removal of huge variety of workpieces to offset CNC machine by automatically engineered robotic arm which results in improved production throughput and lower labor cost.
QA and testing station to ensure constant product quality	Neural network enables reliable visual detection of quality defects to reduce labor cost, improve process throughput and product quality.
QA and entire production line	compile production data recorded by sensor for early detection of defects which speeds up the quality assurance process and improves reliability.
Management of Production Companies	Data as basis for innovation, business agility and critical decision-making through AI and analytics to increase effectiveness, reduce risk and create competitive advantage.

## Competency Map & Learning Paths (technical & social aspects)



## “On-the-Job” Learning Content

The screenshot shows a learning management system interface with the following content:

- Navigation: Home, Navigation, Bookmarks, Notes, More
- Language: EN
- Logo: EIT Manufacturing
- Course: LPI N2 AI Basics 2
- Section: Terminology
- Progress: 88%
- Question: What did you learn in this learning nugget?
- Options:
  - What are Neural Networks?
  - Differences between Artificial Intelligence, Machine Learning and Deep Learning
  - Examples of how Neural Networks are already being used today
  - Why Neural Networks need to be trained?
- Instruction: Please drag and drop the correct pairs
- Drag-and-drop area:
  - Neural Networks
  - Deep Learning
  - Machine Learning
  - Artificial Intelligence

# 5. The result

- 2 learning pathes (technical / social)
- 27 learning nuggets
- 1 Guided Learning Platform



## My learning nuggets

What are you looking for?

Filters

**External Author**  
**LP1 N1 AI Basics 1**  
This is Part 1 of the Introduction for AI in production  
10. Nov. 2020 Info Any 40 min.

Type  
Info Nugget (12)  
Task Nugget (2)  
Question Nugget (1)

**External Author**  
**LP1 N2 AI Basics 2**  
This is Part 2 of the Introduction for AI in production  
10. Nov. 2020 Info Any 40 min.

Author  
External Author (15)  
Festo Didactic (0)

Sorting

