



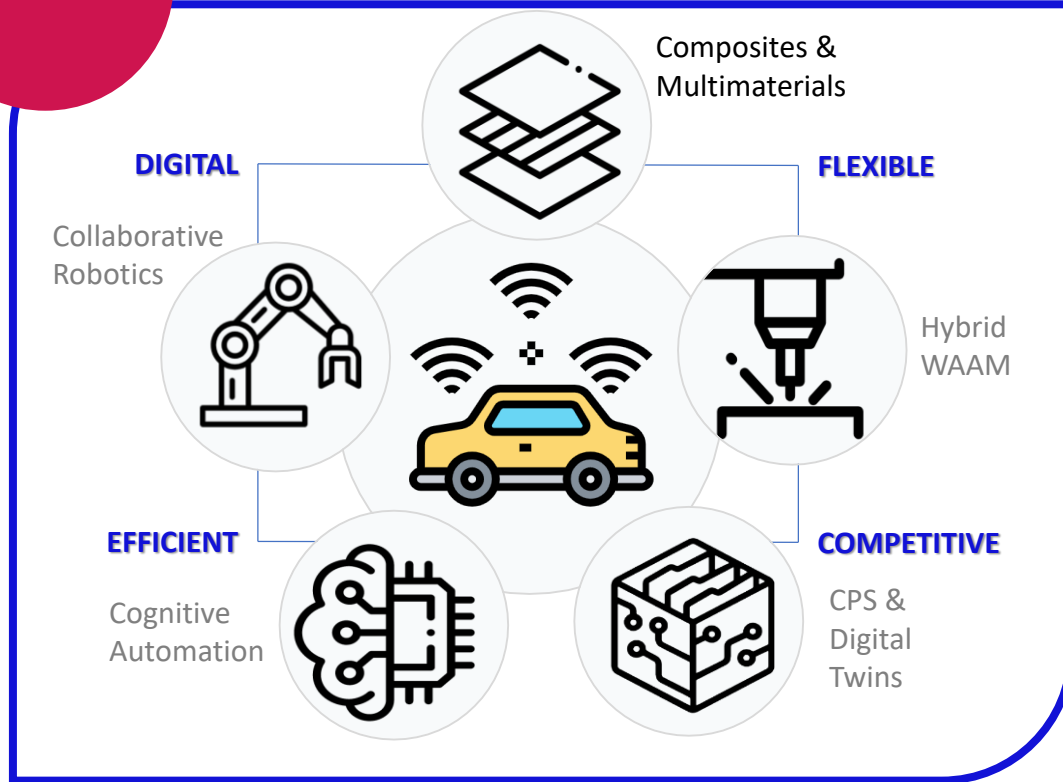
NETWORK FOR EMPOWERING PEOPLE IN ADDED-VALUE
MANUFACTURING SYSTEMS AND TECHNOLOGIES –
REGIONAL INNOVATION SCHEME



M-NEST-RIS: Challenges

FACTORY

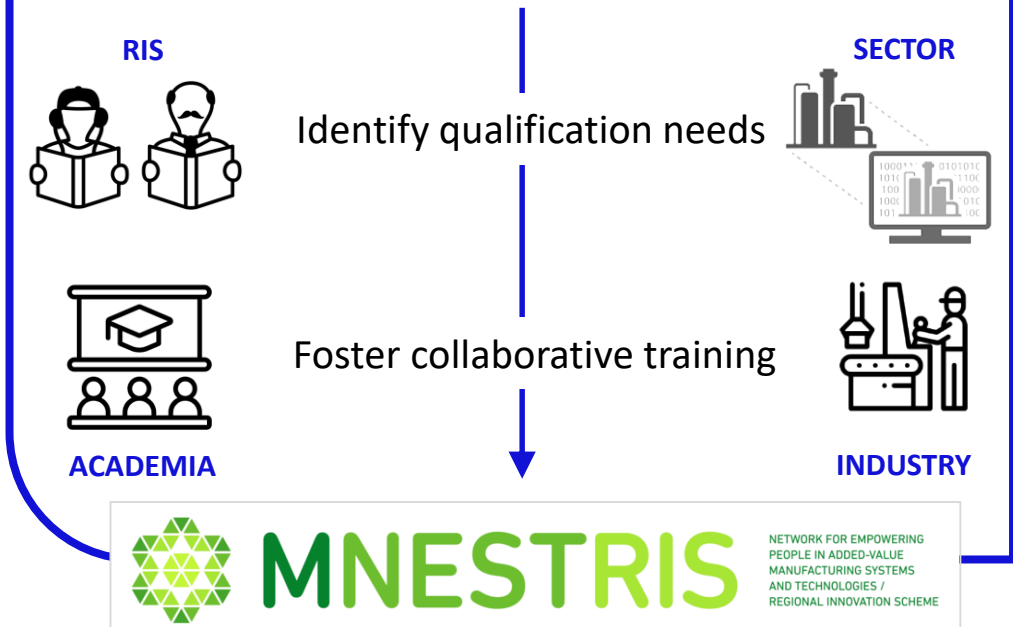
Manufacturing



Societal

CLASS

To adapt the trainings to better prepare and empower the workforce for this manufacturing and digital transformation, particularly in RIS.



M-NEST-RIS: Proposed Solution

Complementary Technological Hotspots



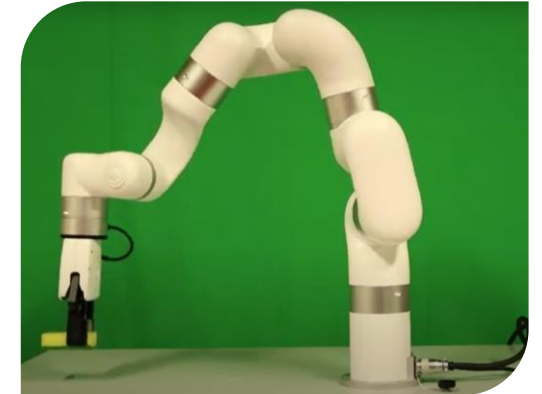
 **Portugal**



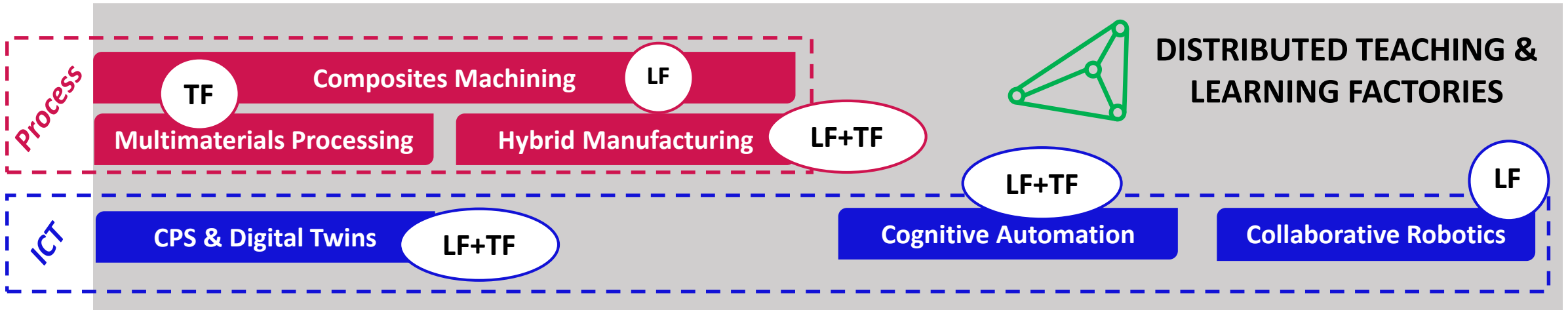
 **Czech Republic**



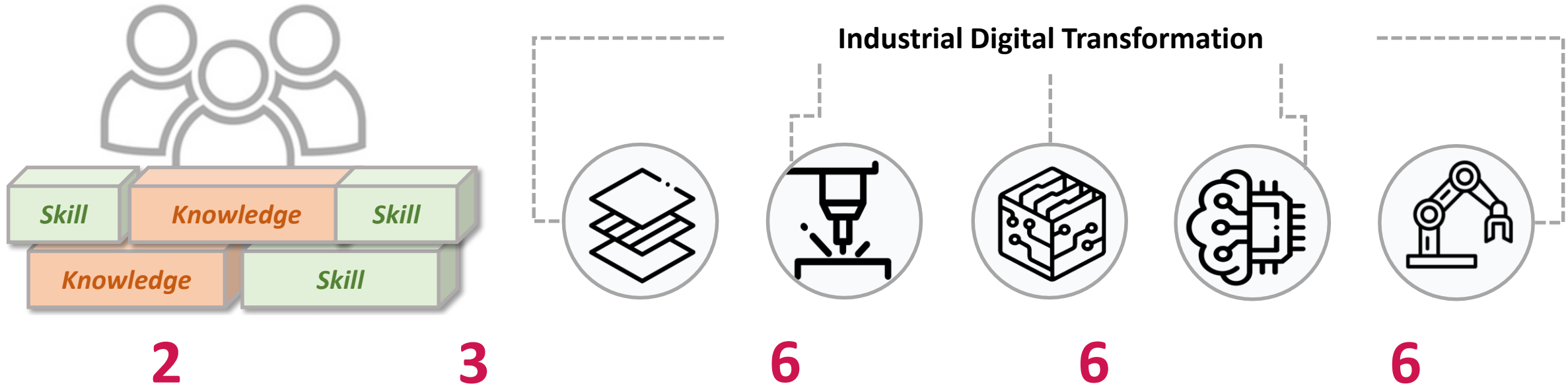
 **Greece**



 **Estonia**



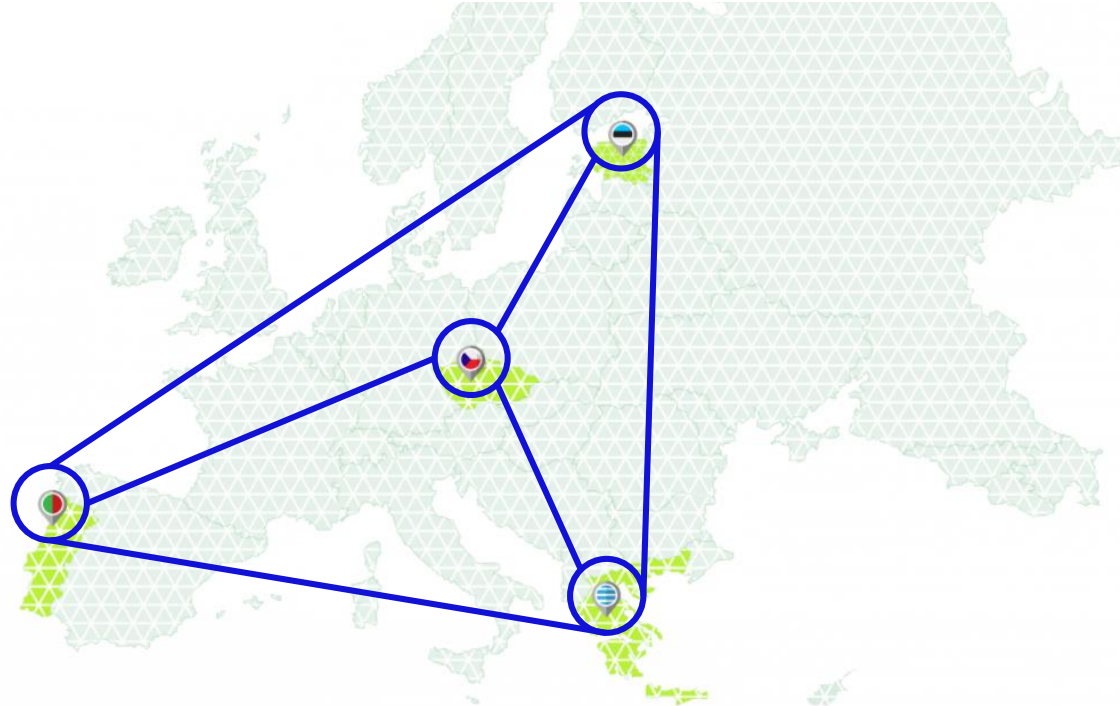
M-NEST-RIS: Expected Benefits



Learning Domains	Learning Schemes	Learning Evaluation Tiers	Learning Hubs	Learning Modules
<ul style="list-style-type: none"> Process-driven ICT-Driven 	<ul style="list-style-type: none"> Teaching Factory Learning Factory Learning Event 	<ul style="list-style-type: none"> Attendance Activity Learner Perceptions Knowledge Decision Making Task 	<ul style="list-style-type: none"> LAY2FORM Testbed 5-axis Milling Testbed WELDPRINT Testbed Welding Robotic Cell Testbed DINASORE Testbed xArm7 Testbed 	<ul style="list-style-type: none"> Multimaterial Drilling FRP Edge Trimming Hybrid WAAM Cognitive Automation CPS & Digital Twins Collaborative Robotics

M-NEST-RIS: The EIT role

-  **Portugal**
INEGI, INESC TEC and FEUP
-  **Greece**
Laboratory for Manufacturing Systems and Automation, University of Patras
-  **Czech Republic**
Czech Technical University in Prague
-  **Estonia**
University of Tartu



The **EIT funding** has been crucial for establishing 4 complementary factory units in RIS countries, which are now activated and can be used to implement new distributed TLF projects.

Plus, the **EIT support** enabled the development of some original didactic content that can be further exploited in other EIT educational initiatives.

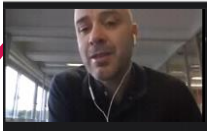
M-NEST-RIS: Results so far and Next Steps

Results so far

6 companies

60 trainees

Demo-sessions



Teaching Factory

Learning Factory

Learning Webinars

5

Real Problem-Solving
Projects Implemented

5

Hands-on Experience
Projects Delivery

5

Industry-oriented
Educational Products

Validation

Launch

Next Steps



For more information please visit our website:



<http://m-nest-ris.eu/>

Follow us on the social networks!



https://twitter.com/mnest_ris



https://www.instagram.com/mnest_ris/



<https://www.linkedin.com/company/m-nest-ris/>



Partners:



EIT Manufacturing is supported by the EIT,
a body of the European Union